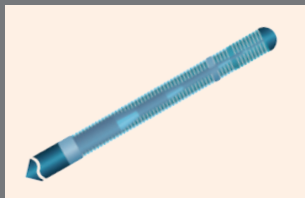


Naviguide™ PTCA

STEERABLE PTCA GUIDEWIRE

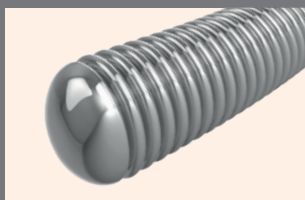
One piece core construction ensures torque is transmitted along the central axis and supports the entire guidewire from proximal to distal. Jointless spring coil ensures smooth torque transition.



- Designed for high performance



- Optimized steerability



- PTFE and hydrophilic coatings to meet all anatomical and lesion requirements

TECHNICAL DATA

Diameter:	0,014"
Length:	195 cm
Core material:	stainless steel
Coatings:	Hydrophilic or PTFE
Distal configurations:	Extra Floppy, Floppy, Intermediate
Tip radiopacity:	3 cm (Platinum Alloy Spring Coil)

ORDER INFORMATION NEVIGUIDE™ PTCA

	PTFE COATED	HYDROPHILIC COATED
STRAIGHT INTERMEDIATE	507110102201	507110102204
STRAIGHT FLOPPY	507110102202	507110102205
STRAIGHT EXTRA FLOPPY	507110102203	507110102206

www.alvimedica.com

Please contact your local sales representative for product availability.

Not for sale in the USA and Japan.

The images shown within this document are of a purely illustrative nature and are not intended to depict reality.

Please consult product labels and package inserts for indications, contraindications, hazards, warnings, cautions and instruction for use.

©2014, Alvimedica. All Rights Reserved.

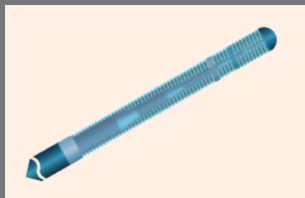


back to life!

Naviguide™ CTO

STEERABLE PTCA GUIDEWIRE FOR CTO

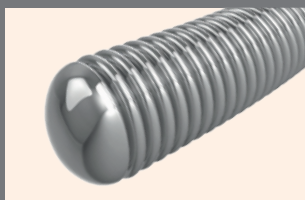
Extra stiff Guidewires for highly stenosed lesions. Designed to cross CTO. One piece core construction removes abrupt transitions and ensures torque is transmitted along the central axis.



- Designed for high performance in CTO



- Optimized steerability



- Multiple distal shaft/tip configurations for wide penetration capabilities

TECHNICAL DATA

Diameter	0,014"
Wire length:	195 cm
Core material:	stainless steel
Coatings:	Hydrophilic
Distal configurations:	3g 4.5g 6g 9g 12g
Tip radiopacity:	3 cm (Platinum Alloy Spring Coil)

ORDER INFORMATION NEVIGUIDE™ CTO

TIP LOAD	HYDROPHILIC COATED
3.0 g	507110102301
4.5 g	507110102302
6.0 g	507110102303
9.0 g	507110102304
12.0 g	507110102305

www.alvimedica.com

Please contact your local sales representative for product availability.

Not for sale in the USA and Japan.

The images shown within this document are of a purely illustrative nature and are not intended to depict reality.

Please consult product labels and package inserts for indications, contraindications, hazards, warnings, cautions and instruction for use.

©2014, Alvimedica. All Rights Reserved.



back to life!